



How many times do you look at another photographer's images, and think:
"Where can I take shots like that – they look so beautiful"? Chances are – you can.

Many of the images you look at with envy are shot within that particular photographer's local environment. It is not necessary to travel long distances to exotic places chasing the kind of shot that inspires you. Most places have areas that are worthy of your efforts if you just use a practical, common-sense approach to finding them. Plus good planning will often enable you to get those images sooner rather than later. I have a plan which ensures that I can explore my local environment whilst hopefully capture the types of images that I see in other photographers work that I admire so much.

So what does this plan entail? Essentially, I have taken out a map, and drawn a circle, centred on my house, that extends out to approximately one hour's drive from where I live in any direction. But first I have an idea in mind as to where I am wanting to go within that circle which helps me to pinpoint a starting point. Then I draw a line to that place. This is then used as a radius from which I base my "Circle of Exploration". Using an hour means that you are fairly close to your destination and can get there relatively quickly.

I try to see what features, suburbs, towns and places exist within that circle, then begin to research which items, places and events exist or occur that are of interest to me photographically. This includes, but is not limited to things such as rivers, beaches, waterfalls, mountains, hills, buildings, historic places, cultural events, celebrations, significant dates, markets.....the list is only limited by your

FEATURING

ANDREW FULLER



interests, and what you would like to achieve photographically. The information can be gathered in many ways. Friends, work-mates and family may have knowledge of places within your circle which may be of interest and the internet has an almost endless supply of information and maps which will invariably prove valuable. Visiting some of the places over a period can reveal the finer details of some of the subject matter, as can stepping out and asking the locals. You will be surprised at the helpfulness of most people, especially if you are showing an interest in their communities, if you take the time to ask. Sometimes, you may even find out about places and things which are known within local communities to help you in your explorations.

Once you have started to compile your list, it then pays to do some extra research. As I am predominantly a landscape photographer, it is worthwhile to find out where things lay geographically. What are the cardinal points that will effect the final image. What are the main features about a place. What should you include or exclude. Where do you need to be to get the shot you want. Is it on the top of a hill or the bottom, near the water's edge or further back? Going to a place a number of times to explore features from many different viewpoints, helps me to know the way the sun travels and how the lighting will be at certain times of the day. This assists in planning future trips and it does not take long to know when the best times of the day are for photography within any given area at any particular point in time.

As the sun 's path changes from season to season what might work in one month, may not work in another. The weather forecast, tide times, sunset and sunrise times, as well as moonrise and moonset times (if you are a night photographer) can all have an impact on the final outcomes of your image taking. Researching, or knowing where to find this information, is almost certainly an essential part of your planning. There is no point going out to a special geological feature to catch a sunrise shot if you arrive 15 minutes after the sun has risen because you weren't quite sure about the exact time this was to happen.

Other methods for gathering the information about subjects can include keeping an eye on entertainment guides and Community Service pages in your local newspapers and other published material, and through researching on the internet. Sporting events, car club rallies, protest rallies, regular markets with buskers and the like all provide great opportunities, depending upon your interests. Knowing when and where these events will occur is an important part of obtaining the images you want.

So to me, good planning is the basis of getting those shots you admire. It also helps to provide you with photographic opportunities rather than leaving things to mere chance. Consider the types of images you want to capture and plan accordingly, however you want to do it. This is my way and it may or may not be yours, but being prepared and approaching your image taking with a pre-considered plan will often mean that you come away happy and you don't have to travel far to do it.



Following on from last edition, Ron Fehlberg provides us with the next instalment in relation to Tasmanian Lighthouses. This time it is:

MAATSUYKER ISLAND - Ron Fehlberg



Late evening panorama Maatsuyker Island

The Maatsuyker Group of Islands is located approximately 10km off Tasmania's south coast. It comprises six islands and two rocky outcrops and is part of Tasmania's largest national park – The Southwest National Park and The Tasmanian Wilderness World Heritage Area. Maatsuyker Island is the second largest and most southern island. It is approximately 1.5km wide and 3.5km in length and its highest point is 278m above sea level.

Maatsuyker Island was named in November 1642 by Dutch explorer Abel Janszoon Tasman. Tasman is thought to have named the island after Johan Maatsuyker an official of the Dutch East Indies, who later became the Governor General of the Dutch East Indies.



Maatsuyker Lighthouse from the air



Tea Trees out in flower

It has been suggested that “Maatsuyker” is derived from the Dutch word meaning ‘ a measure of sugar ‘ and refers to the white flowers of the Tea Tree (*leptospermum scoparium*), which would have been flowering prolifically on the island at the time of Tasman's passage.

Tasmania lies in the path of the “ Roaring Forties “ frequent tragedies occurred during the time of colonisation highlighting the need for navigation lights around our dangerous coastline.

After investigation of the south west Maatsuyker was chosen as the most practical site. The light tower was built 118m above sea level. The site was – and still is – the most southerly Lighthouse Station in Australia. The tower is 17m high and was opened on 1st June 1891. The first Light keeper was R.W.Garraway. He was responsible for the first Maatsuyker weather observations, which continue to this day for the Bureau of Meteorology. Records of those observations are still available.

In 1996 the Australian Maritime Safety Authority (AMSA) installed a small automated light near the original tower. Maatsuyker was the last Light station in Australia to be de-manned. A volunteer keeper was placed on the island until the Tasmanian Parks & Wildlife Service took over control of the island. A volunteer caretaker program was then put in place and is still in operation today. In 2003 a Friends of Maatsuyker Island Group was formed. They have regular working bees to the island to maintain the buildings, weed management, check on flora and fauna. There are two seal colonies and numerous seabirds. At the last count there was approximately 800,000 short tailed shearwaters.



Clockwork mechanism still in working order



Most of the information in this article comes from the historical documentation belonging to the Friends of Maatsuyker Group of which I am a committee member - Ron Fehlberg.

Elephant seal resting



View of the Needles



Sunset Maatsuyker Island



APSCON 2014 - David Oldfield AFIAP FRPS AAPS HonFAPS

Each year members of the Australian Photographic Society gather together for their annual convention, which will be held this year as APSCON 2014 in Ballarat, Victoria from 20 – 26 September 2014. This is the one time in the year when you can meet old friends and form new ones which will last you a lifetime.

The first convention was held in July 1963, a little over a year after the formation of the Society. It was held over a weekend, with the lectures in the Melbourne Camera Club rooms at 21 Queen Street and the Official dinner in the Southern Cross ballroom, a hotel which no longer exists! The cost was £2/10/- including the dinner, how things change. The term APSCON for the **A**ustralian **P**hotographic **S**ociety **C**onvention was first coined by President Jack Andrews in the April/May 1969 edition of the Society's journal *Image*.

You can be assured of listening to inspiring speakers on a wide variety of topics to suit all tastes and interests. This year we kick off with an amazing illustration of 3D photography and how it has been part of a journey in photography. Follow that with a talk by one of Australia's foremost bird photography experts on his seventy years in the field. Then it's time for APS National Digital Images and the Welcome Dinner which gives you time to catch up with friends old and new in a relaxed setting.

Next day you will see panoramas in a different perspective and enjoy the golden landscapes around Ballarat followed by a glimpse of period photography at the award winning Sovereign Hill gold rush outdoor museum. In the evening there is an optional visit to Sovereign Hill to experience the captivating *Blood on the Southern Cross* multi-media show to put yourself in the Eureka experience.

Monday includes a rare opportunity to see high speed photography in use followed by an inspiring talk on movie production by one of the leaders in this field. You will see the visual wonders of The Grampians to prepare you for the optional whole day tour next day to experience for yourself the landscapes and Spring wildflowers of that delightful area.

On Wednesday morning you will see an aspect of underground industrial photography from a local expert. In the afternoon you can choose to go on one of five workshops ranging from portraiture in an 1860s flour mill, to landscapes near Ballarat, bird watching sites nearby, a visit to Sovereign Hill, or a walking tour of historic Ballarat. Wednesday evening will feature the Mid Week Dinner at Sovereign Hill.

Thursday morning will cover hand made photographs, using traditional skills and techniques which are becoming increasingly sought after in this digital age. The afternoon will be devoted to audio visual production with the importance of including emotion and how to get the most out of your sound track.

Friday will give you a taste of APSCON 2015 and the APS Annual General Meeting at which the APS President for the next two years will be installed. The final event, considered by many to be the highlight of the Society's year, is the Annual Dinner and Presentations of Honours and Awards.

Sprinkled throughout the week are showings of APS National audio visual images, meetings of all APS Divisions and several exhibitions of photographs for you to appreciate at your leisure. Many of these items are necessary to keep APS moving forwards but will not detract from your enjoyment of the program of speakers which will be held in the Geoffrey Blainey Auditorium on the Mount Helens Campus of Federation University. This is an excellent tiered auditorium where you will enjoy a clear view from each seat.

FROM ANNE

This year is the last year whereby Apscon is being run in the traditional way. Next year will see a new beginning with Apscon only happening over 5 days instead of 7 with the main speakers and information happening on the weekend, allowing those people who work to attend. This will mean that the introductory day will be the Wednesday with it finishing on the following Sunday. In the past as in Ballarat, the conference started on a Saturday and finished on the following Friday night with the annual dinner. However, not all people who attended the conference stayed for the dinner. Next year the dinner will be the Sunday night. There are pros and cons to this, but mostly it will mean a less expensive option and a less time-consuming one. So if you want to participate in the last Apscon in its current format, this year is the one to go to. Plus it is not far from Tasmania to get to.

The other change is that APS management have formed their own Apscon committee which are responsible for procuring speakers and workshop co-ordinators. Basically they are responsible for the creation of the main programme, rather than this responsibility fall to the local people who co-ordinating the event at the place in which it will be held. Previously a person was appointed as a Convention chair and this person was responsible for gathering his or her committee who took charge of the whole management of the conference. In many ways, this is a good move with the management committee taking an active role as the programme organisation was always the most difficult to put into place.

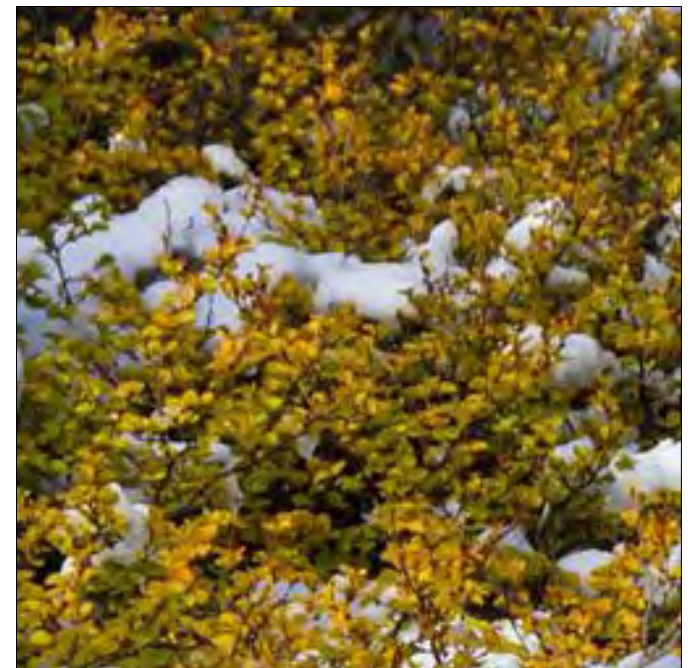
Full details of APSCON 2014 and on-line registration is available on the APS website,

<http://www.a-p-s.org.au/index.php/about-us/apscon>

David



A touch of Winter, thanks to Ian Robertson. Featuring Tasmanian *Nothofagus gunnii* (deciduous beech), commonly known as fagus. More information [here](#).



A SELECTION OF IMAGES FROM FAY & DENIS HULME OF WYNYARD
They have been taking photos of motocross and were willing to share some with you.



Taking photographs of motor bikes racing is very new to us but we thought we would go and have a look. At the time, we were searching for something that would offer us a different style of image than what we were used to, so we went along to Smithton's Bryan Park, to see what might eventuate. We initially allowed 2 hours, thinking this amount of time would be enough but we ended up staying for 6 hours.

We enjoyed the challenge with lots of action and found we had got some okay photos. However we decided that it takes time to get used to something different. So off we went again to Oldina, then to Penguin, Wynyard and Smithton. We were going wherever they were racing. Some days there were dusty conditions, which made for good photos and other days it was wet, making it muddy & slippery. But this gave us different action photos. The wet days were a lot harder on our camera gear and us, but it was great when the action was there.

We have now learnt to love it and our camera techniques are always improving. A couple of pointers - a fast shutter speed is important, so too is a good background. As far as where to find the racing, we found the web quite helpful.

We have now passed on our images to a local club so the riders can see how they went - Denis & Fay Hulme









For information I did a google search but there does not appear to be any one website giving you information for all clubs.
There are quite a few listed, so you would need to explore what was around within your own area - Anne

Tasmanian Photographic Federation Inc.

Annual General Meeting
Delegates Meeting
Saturday 21 June 2014

Meeting Location

The TPF Annual General Meeting and Presentations will be held at the Windsor Park Centre, Windsor Drive, Riverside. Windsor Drive runs east off the West Tamar Highway directly opposite Ecclestone Road and the Riverside Hotel.



TPF PROGRAMME

Hosted by the West Tamar Camera Club Inc.

- 10.00 am Morning tea. Those not attending the Annual General Meeting or Delegates' Meeting may like to visit the Tamar Islands Wetlands which is a 5 minute drive from the Windsor Park Centre.
- 10.30 am **Annual General Meeting followed by Delegates' Meeting**
- 12.30 pm **Lunch break** (BYO). Tea and coffee will be provided.
- 2 - 3.00pm **Presentation by Rick Smith "Cricket Photography - and what I get to do"**
Rick Smith has been Cricket Tasmania's match photographer for over 20 years and has had many of his cricket images published in newspapers and magazines.
- 3.15 - 4.45pm **A Mystery Outing** for photography and afternoon tea (at own expense). Full details of this outing will be advised on the day.
- 5.00 - 6.00pm **Presentation** of Bi-Annual competition. **Presentation** of TPF trophies.
- 6.30 pm **Dinner** Riverside Hotel, 407 West Tamar Highway, Riverside (at own expense). Numbers required in advance please.

Charge - There is a \$5.00 per person charge to cover the presentation by Rick Smith and the TPF presentation.

Contacts

Norton Harvey OAM
WTCC President
Tel : 6394 4817

Email : nortonharvey@bigpond.com

Joan Bessell
WTCC Secretary
Tel : 6394 3166

Email : gordon.bessell@bigpond.com

ABSTRACT PHOTOGRAPHY - ATHALIE TAYLOR AFIAP LAPS



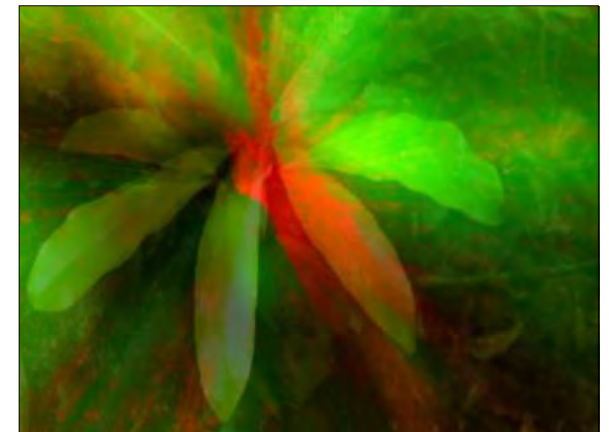
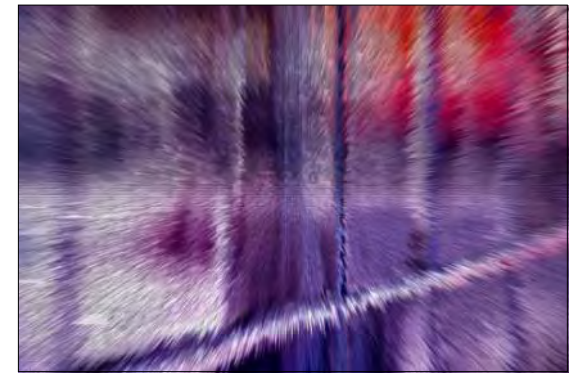
My interest in abstract began many years ago when I was a student studying towards a Diploma of Needlecraft. Many aspects of the course involved design and my work often included strong elements of line, curves, angles, shapes, positive and negative spaces, texture and pattern. Later my personal work, using fabric manipulation techniques, machine and hand embroidery, leaned heavily toward the abstract too.



Further down the track, while studying at UTAS, my textile work again developed into a style where the techniques I explored included simple shapes, curves and lines, patterns and textures, colour of course added another element.

It was a natural progression for me to bring these strengths into my photography. I am always seeing the abstractions that are everywhere I look. I see them in reflections, architecture fascinates me and presents endless opportunities for abstract images, nature too; trees, rocks, shells and the seashore provide much to explore. I see lines and curves in many subjects, shapes are there to be explored too. I enjoy looking for ways to reduce a complex subject to a simplified abstraction. I like to fill the frame and I am careful to make sure that patterns and design conclude in an aesthetically pleasing way, especially at the edges.

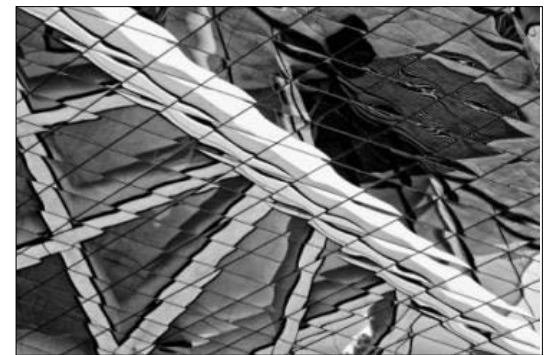
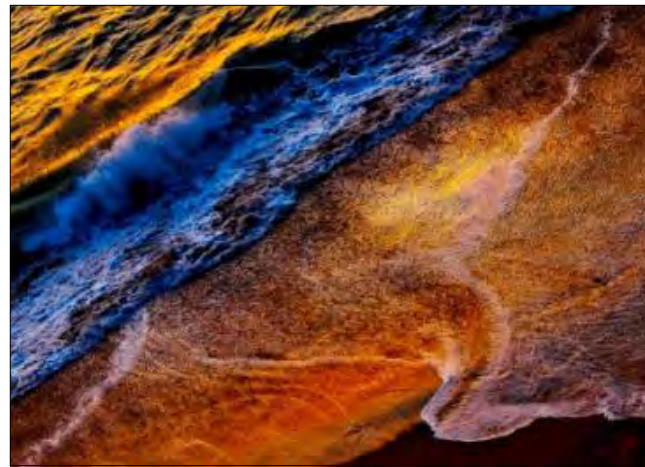
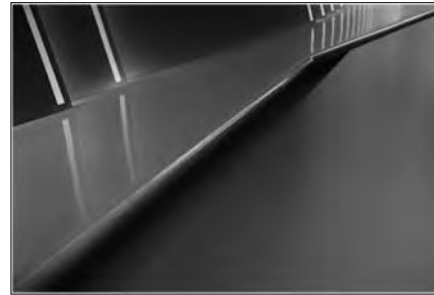
Just as I used my sewing machine as a tool to manipulate fabrics and create textures in my artwork I found that the camera could also be used to manipulate an image by using movement.



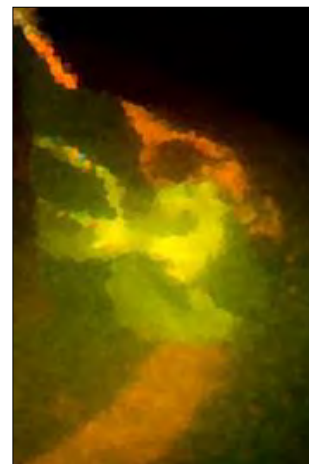
Photoshop too provided other ways of manipulating and adding texture and interest to abstract images.

My personal photographic style produces simple, uncluttered images with lines, curves, angles, reflections and shadows and these elements are present in my abstract images too.

The images portrayed in this article are just a few examples from my collection. There are many subjects you can explore, for example water, plants, flowers, kitchen utensils, sand at the beach, rocks, reflections, shadows etc. The main thing is to simplify, look at lines, shapes, textures, angles, patterns, get in close, look for colour contrasts, forget the rules, try some filters, above all enjoy the process and have fun!



Athalie Taylor



From the Editor

Things are very quiet here in the State. Again the membership is down slightly with 18 members in the South, 20 in the North and 15 in the North West. We as a State are not alone in the membership reduction. Many across APS are leaving, possibly related to the aging membership with minimal younger people coming on board. Times are changing for photography with many options online for people beyond APS.

OUTINGS

I am afraid that I haven't managed to do anything about an outing at this stage. My queries has brought about minimal response so once again I have left this option for another time. Plus I have found myself very busy with my Uni work and I struggle to find the spare time to get away. So apologies all around for not pursuing this.

AIPC (AUSTRALIAN INTERSTATE PHOTOGRAPHIC COMPETITION).

Soon a committee will be selecting work from the entries received to make up a Tasmanian entry for the above competition. This is to be judged by a group in Victoria and as per tradition, the results will be announced at Apscon Ballarat in September. This time we took quite a lot of the entries from the annual Photographer of the Year which is run through the Tasmanian Photographic Federation. (I spoke about this in the last newsletter) This is not going to be possible in the future because it will not be held until late June, making it impossible to judge and get the entries across to the mainland in time for their closing date. So if we intend to send an entry next year, we will be reliant on people sending us work for selection to represent the State in this competition. As well, the Tasmanian Photographic Federation is on shaky ground with it being reduced to two get togethers a year, June & November. Plus at the coming AGM, there may or may not be people willing to take on some of the positions that will be vacant this time around. Only time will tell.

HONOURS

The recent round of honours has just finished and I am aware that some of our Tasmanian members have been awarded various honours this year. I congratulate the recipients and at a later time will list them in here, but based on APS rules, they cannot be named officially in any APS publication until after Apscon in September. Just in relation to honours and the work which goes into decision making and processing of applications each year, I would like to thank our two northern members Felix Staub, current Honours Chair and Phillipa Alexander, for the work they have done with honours this year. It is much appreciated. In addition, I would also like to thank Bronwyn Casey from Victoria for her work in the FIAP applications.

VOLUNTARY POSITIONS WITHIN APS

For information, most positions within APS go for a two year period, with some being able to be extended and others finalizing at the end of the two years. This year is the end of a two year period and APS will be looking for various people to take on some of these voluntary positions that carry the society through into the future. If there are any volunteers amongst us, I am sure your efforts would not go unrewarded - Anne

AUSTRALIAN NATIONALS & INTERNATIONALS

I have been trying to compile a list of these with contacts so that members can find them easily. They do appear on the APS website, but generally this is not until they have been given approval from APS. Some members like to know in advance when something might be coming up. To check for approvals so entries can be counted for honours, you need to go to the APS website under Exhibition Services & look for competitions/exhibitions. Here is the relevant link <http://www.a-p-s.org.au/index.php/exhibition/comps> - Anne

AUSTRALIAN NATIONALS	CLOSING DATE	CONTACT	ORGANISERS	APPROVAL NO
Newcastle National	10 th January 2014	Lucy Price AFIAP AAPS Or admin@newcastleshows.com.au	Newcastle Regional Show (See website)	2014/03
Perth National Exhibition of Photography	28 th July 2014	http://www.perthroyalshow.com.au/best-in-show/competition-entries/photography.aspx	Perth Royal Show Society Via website	2014/012
Redlands Camera Club National	4 th August 2014	http://www.a-p-s.org.au/index.php/exhibition/comps	exhibitions@redlandscameraclub.org.au Redlands Camera Club, QLD	2104/11
Warragul National	2 nd May 2014	http://warragulcameraclub.org/d/6b122ea9-0701-4420-a387-c51515e23e6a?AspxAutoDetectCookieSupport=1	Warragul Camera Club webmaster@warragulcameraclub.org	2014/013
Nature National	11 th May 2014	http://www.a-p-s.org.au/index.php/exhibition/aps-nat-exhib/nature	APS NATURE DIVISION	2014/14
Autumn A.V.National	26 TH April 2014	http://www.a-p-s.org.au/index.php/exhibition/comps	APS AV DIVISION	2014/15
Royal Adelaide Show National Exhibition of Photography	27 th June 2014	entries@adelaideshowground.com.au (08) 8210 5211 (Between 9.00 am and 5.00 pm Monday to Friday)	Adelaide Show Society – entry forms http://www.a-p-s.org.au/index.php/exhibition/comps	2014/17
APS National Exhibition digital	14 th June 2014	http://www.a-p-s.org.au/index.php/exhibition/aps-nat-exhib/digital	APS DIGITAL DIVISION Dennis Nolan	2014/016
APS National AV	27 th June 2014	http://www.a-p-s.org.au/index.php/exhibition/comps	APS AV DIVISION	2014/016
Ballarat National	11 th October 2014	http://www.a-p-s.org.au/index.php/exhibition/comps	Ballarat Camera Club ballaratnational@ballaratcameraclub.org.au	2013/13

AUSTRALIAN NATIONALS	CLOSING DATE	CONTACT	ORGANISERS	APPROVAL NO
Sutherland Shire National	22 nd August 2014	http://www.ssneq.org.au/ ssneq@hotmail.com	FCC NSW enquiries@ssneq.org.au	2014/018
Adelaide AV National	21 st February 2014	John and Judith Hodgson jhodgson4@bigpond.com	ADELAIDE AV GROUP	2014/08
Pakenham National	11 th July 2014	http://pakenhamcameraclub.org/pakenham-nationals.html pakenhamcameraclub@hotmail.com	Pakenham Camera Club	2014/19
Hervey Bay Digital Salon		NOTE—THIS DID NOT RUN THIS YEAR		?
Heritage Toowoomba Royal Show National	28 th February 2014	NOTE—THIS DID GO AHEAD BUT WITH NO APPROVAL, SO IT IS NOT ELIGIBLE TO CLAIM FOR HONOURS.	Toowoomba Show Society	?

AUSTRALIAN INTERNATIONALS	CLOSING DATE	CONTACT	ORGANISERS	APPROVAL NO
Maitland International Salon	13 th January 2014	As per website or enquiries@maitlandsalon.org	Maitland Show website	2014/02
Sydney Harbour International	14 th April 2014	http://www.sydney-harbour-international.org.au/ Director@sydney-harbour-international.org.au	Photographic Exhibitions of Australia Len Brown - director	2014/002
Sydney International Exhibition of Photography	28 th July 2014	http://www.sieq.org.au/	Photographic Exhibitions of Australia Len Brown – director	2014/009
Queensland International Digital Circuit	17 th February 2014	http://www.queensland-photo.com/	Gold Coast, Mt Gravatt, Townsville, Maryborough CCs	2014/003-006
Vigex bi-annual print	April 2015	http://www.vigex.org.au/index.html	info@vigex.org.au Geelong Vic	

THANKS TO ALL FOR THEIR INPUT TO THIS EDITION

WITHOUT IT, THERE WOULD BE NO NEWSLETTER



To conclude, I have added one of Andrew's images, a panorama of the Sentinel Range out Lake Pedder way. More information about this area can be found here.
<http://www.tasmaniangeographic.com/intro-southern-mountains/>

And yes, I am always happy to receive any material from anyone for inclusion
Provided it is related to APS, Tasmania or Tasmanian members of APS

It will be printed in an edition with the first available space as close as possible to receipt of the material. It must also be within the ethics and principles of the APS

NOTE: Content is copyright to the author. Any reproduction must be with that person's consent.

UNTIL NEXT TIME ENJOY YOUR PHOTOGRAPHY — ANNE

The next edition of **Tasmanian Light** will be a Spring edition, hopefully out some time before September, so I will be wanting material anytime from now until the second week in August. Thanks again for all the wonderful contributions. Lets hope the next one equals what has gone before — Anne

ab_oconn@bigpond.com

PHONE: 03 6334 5144
MOBILE: 0418 332 022